

# Mahara Gallery

## NEWS

SPRING 2020

Mahara Place, Waikanae,  
Ph: 04 902 6242,  
info@maharagallery.org.nz,  
www.maharagallery.org.nz

OPEN: TUESDAY - SATURDAY 10AM - 4PM, FREE ENTRY

### GALLERY NEWS

#### Kia ora e te whanau Mahara

Since reopening on May 19 our visitors, community and artists have been very keen to reconnect and demonstrate how much they value their district gallery. Local artists and buyers have contributed almost \$5,000 to the redevelopment project funds through the show *re-framed//lockdown*. Covid19 has slowed news on our major funding applications but we continue to work hard towards our goal.

We are thrilled to have a new mural by artists Kate Hartmann and Ruth Robertson-Taylor interpreting Frances Hodgkins and her work now gracing two sides of the Old Waikanae Library building opposite us. View it on our Instagram site [franceshodgkins@mahara](mailto:franceshodgkins@mahara) if you aren't able to visit in person. We have also felt blessed with many weavers working here during their exhibition. They are in the gallery for two more days this month offering korero amongst their exceptional weaving. Lastly, thank you to many who have recently renewed their Friends membership.

This is a very challenging time for the arts and we value your support very much. We remain open at Level 2 with contact tracing, extra hygiene measures and social distancing in place. Some events may be postponed, and openings are limited to 70, but may change again with developments around Covid19. Please stay home if you are unwell, and contact us for clarification if levels change. Take care, stay well and keep the arts in your lives and close to your heart!

Arohanui: stay safe and well.  
Janet Bayly  
Director



HomeRun 2020, Ben Caldwell

### EXHIBITIONS

#### TOI WHAKARĀKAI: NGĀ AHO O TE WHENUA with Te Wānanga O Raukawa.

Runs until SATURDAY AUGUST 29



#### LIVING THE DREAM, Ben Caldwell.

#### THE LOCKDOWN ALPHABET, Joe Buchanan.

#### THE BUBBLES OF PAEKĀRIKI, PORTRAITS FROM A VILLAGE IN LOCKDOWN, Bob Zuur.

Thanks to Paekākāriki Community Board and Epson.

#### FRANCES HODGKINS & THE FIELD COLLECTION.

Courtesy of the Field Collection Trust, supported by the Deane Endowment Trust.

SEPTEMBER 8 - OCTOBER 31



#### 100 DAYS: A JOURNEY

24 local artists present their work made over 100 days, in partnership with Tutere Gallery + Creative Space.

The first two weekends span Kāpiti Arts Trail during which the gallery will be open both Saturdays and Sundays from 9am to 5pm, with artists available to talk about the process and their own and other artist's work.

NOVEMBER 7 - DECEMBER 13



## EVENTS

### **WEAVERS WORKING** in the gallery during **TOI WHAKARĀKAI: NGĀ AHO O TE WHENUA.**

Entry free, all welcome.

**THURSDAYS AUGUST 20 & 27, 10AM - 3PM.**



### **KURA MAUKAU** singing in gallery.

**SATURDAY AUGUST 22, 2 - 3PM.**



### **Recorder quartet concert by DULCIS TIBIA**

With Michelle Greenwood, Rachel Patrick, Roger Palmer, Katrin Eickhorst. Seating limited to 50 at Level 1 or 25 at Level 2. Entry by donation.

**SATURDAY AUGUST 29, 3.30 - 4.30PM.**

**FRIENDS OF MAHARA.** Simon and Kay Brown will speak about locating a fountain painted by Frances Hodgkins in Martigues, south of France. Guests of Friends welcome, \$10.

**SATURDAY SEPTEMBER 5, 3 - 4.30PM.**

### **OPENING for Ben Caldwell, Joe Buchanan, Bob Zuur and Frances Hodgkins' exhibitions**

with Mahara Board chairman Les Holborow and arts writer, editor and curator Mark Amery. All welcome, entry free.

**SATURDAY SEPTEMBER 5, 5PM.**

**ARTIST'S FLOORTALK.** Ben Caldwell, Joe Buchanan and Bob Zuur will discuss their shows.

All welcome, entry free.

**SATURDAY SEPTEMBER 12, 2.30 - 3.30PM.**

**RELIEF PRINTING WORKSHOP with Joe Buchanan, Diatom Press.** Cut a stencil, print stickers, handset and print with traditional metal type. Bring an apron or an old top. For children aged 8 years and over, limited to ten. \$5.00 to confirm your place. Contact gallery for bookings.

**WEDNESDAY SEPTEMBER 30, 10.30AM - 12 NOON.**

**LEAF STITCHING WORKSHOP with artist Birgit Moffatt.** For children aged 12 and over, limited to ten.

**TUESDAY OCTOBER 6, 1.30 - 3.30PM.**

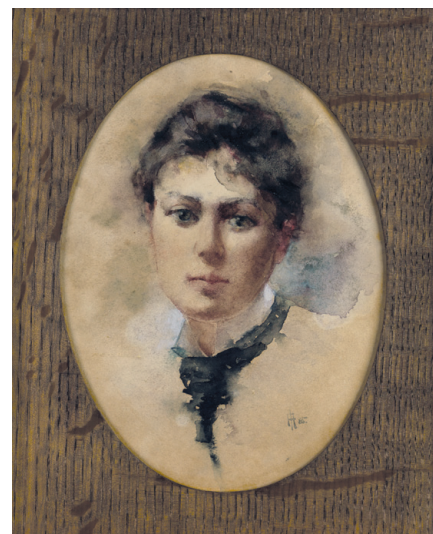
**ROW HOUSES WORKSHOP with artist Yvonne de Mille.** For children aged 7 years and over, limited to ten.

**WEDNESDAY 7 & THURSDAY OCTOBER 8, 1.30 - 3.30PM.**

**SPECIAL EVENT in Frances Hodgkins & the Field Collection.** Mary Kisler, Curator of *Frances Hodgkins: European Journeys* will give a talk on Frances Hodgkins' travels.

Entry free for Friends of Mahara, general public welcome \$20, to support the Mahara Gallery redevelopment fundraising project. Wine and refreshments starting at 4pm.

**SUNDAY 11 OCTOBER, 4 - 6PM.**



Frances Hodgkins, *Isabel Jane Field*, 1895, Courtesy of the Field Collection Trust

## SUPPORTERS

Mahara Gallery gratefully acknowledges the support of the Kāpiti Coast District Council.

*Thank you for our wonderful supporters;*  
Gillian, Lady Deane and Sir Roderick Deane  
The Deane Endowment Trust  
The Philipp Family Foundation  
Ngā Manu Nature Reserve  
Creative Communities Kāpiti  
Beach FM 106.3  
Westbury Pharmacy  
Picture Perfect Framing  
Kāpiti Signs  
Coast Access Radio  
MaxiMarketing Services  
Breaden McCardle Law  
Waikanae Community Board and private donors.

# Mahara Gallery

**Mahara Place, Waikanae, Ph: 04 902 6242**  
**info@maharagallery.org.nz, www.maharagallery.org.nz**

**OPEN: Tuesday-Saturday 10am-4pm. Free entry.**  
**CLOSED: Sunday-Monday, Good Friday,**  
**Christmas Day & Boxing Day**

